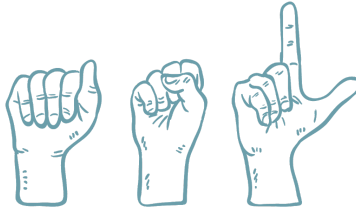


ENLIGHTENING  
THE DARK



AMERICAN SIGN  
LANGUAGE

REQUIRED MATERIALS FOR ETD ASL II PROGRAM

- Students will need access to one of the following:  
desktop/laptop/tablet/ipad/iphone etc so they can write essays and video projects.
- Students will need access to our Slack App (through either a computer or phone)
- Students will need pencils (pens are optional)
- Students will need notebook paper
- Students will need highlighters
- Students will need a 2 inch binder
- Each student is REQUIRED to bring one (1) ream of paper
- Each student is REQUIRED to bring one (1) roll of paper towels

*All written materials and coursework will be provided by ETD (resource fee included in first payment invoice)*

*If you would like to buy your own textbook: [Signing Naturally Student Workbook, Units 7-12](#)*